

FROM THE DIRECTOR'S DESK

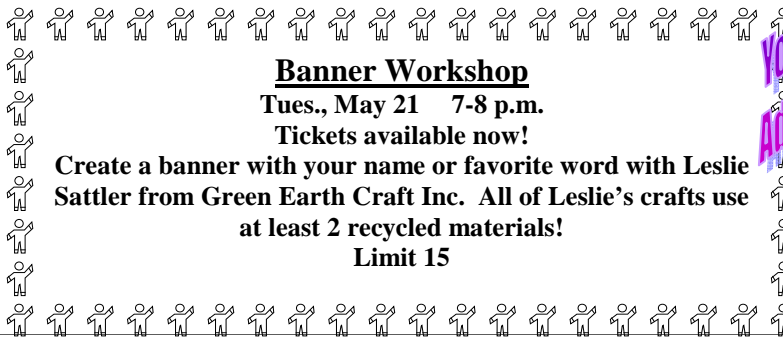
We are most pleased to report that our community is borrowing books, CDs, DVDs, magazines and museum passes at a record pace while also attending our many events and programs sponsored throughout the year. We welcome the increased demand for our resources and services and look forward to another year serving all the residents of the community. We welcome your suggestions on how we may better serve our community!

A REMINDER

The Annual Operating Budget Information Hearing will be held on Monday, May 13th at 7:00 p.m. in the Local History Room.

The Library Budget Vote (Proposition 2 on ballot) and Trustee Election (Proposition 5 on ballot) will be held on Tuesday May 21st between the hours of 6:00 a.m. and 9:00 p.m. at the Plainedge High School gym.

Marilyn Kappenberg



Banner Workshop

Tues., May 21 7-8 p.m.

Tickets available now!

Create a banner with your name or favorite word with Leslie Sattler from Green Earth Craft Inc. All of Leslie's crafts use at least 2 recycled materials!

Limit 15



Tie-Dye Workshop

Tues., May 28 7-8 p.m.

Resident tickets available 5/7 Non residents 5/14
Gina Leone will help you create your own personalized tees and flip flops for a summer of fun!

Limit 15 for both workshops

Flip Flop Workshop, June 11

Resident tickets available 5/21 Non-residents 5/28

SWAROVSKI NECKLACE \$10.00

Tues., May 7 6:30-8:30

Sign-up in progress

Ofra will help you design & create your own unique illusion necklace with either genuine Swarovski or Australian crystals! Make one as a gift for Mother's Day or keep it for yourself! Young Adults welcome.

Limit 12

DRAWING PART 3

Tues., May 14 7-8:30 p.m.

Resident tickets available now!

In this 3rd drawing class, Emilia will cover shading, tone, perspective and form!

Limit 15



HIGH SCHOOL VOLUNTEERS GRADES 10 & UP NEEDED!

Volunteers are needed to help in the Adult Reference Dept. this summer for any or all of the following times:

Tuesday and/or Thursday mornings 10 a.m.-12 p.m. & Monday evenings 6 p.m.-8 p.m.

Pick up a registration form at the Adult Reference Desk starting May 15.

Volunteer service will begin on Monday, July 1 and will end August 8.



AT YOUR SERVICE

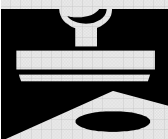
The NOTARY PUBLIC hours are:

Mondays, 10 a.m. - Noon & 6 p.m. - 8 p.m.

Tuesdays, 10 a.m. - Noon

Wednesdays, 6 p.m. - 8 p.m.

Thursdays, 2-4 p.m. & Fridays, 10 a.m. - Noon & 2-4 p.m.



NOTE: Photo identification required. Documents to be notarized **must** be signed at time of notarization, *not* before. You must bring your own witness if needed. Please telephone the Library to confirm a notary is available.

Senior Connections

Our Senior Connections Volunteer, Rosemary Styne will be available to assist with questions and services for seniors on the 1st and 3rd Wednesdays of the month from:

11 a.m. to 1 p.m. Please call first!.

COURSES (Please Pay By CHECK or EXACT CHANGE Only!) NO REFUNDS!

The Library offers on-going classes for Aerobics and Yoga.
Check for availability at the circulation desk.

YOGA (Limit 18 per class)

Monday Early Morning Yoga \$65
Instructor: **Edith Jason, E-RYT 500**
Class started 4/8-6/8 10-11:30 a.m.
Sign-up in progress
8 Sessions (No class 5/6,5/27)
New class begins 6/17

Monday Mid-Morning Yoga \$65
Instructor: **Bette Collom, Kripalu Certified**
Class started 4/15-6/17 11:45 a.m.-1:15 p.m.
Sign-up in progress
8 Sessions (No class 5/6, 5/27)

Thursday Evening Yoga \$65
Instructor: **Edith Jason, E-RYT 500**
Class started 4/11-6/6 5:30-7:00 p.m.
Sign-up in progress
New class begins 6/13
8 Sessions

***Registration is still open for current on-going classes**

We invite you to join your Library's **Yoga** classes and experience this unique system of exercise. **Beginners and experienced students are always welcome.** You may work at your own level. Firm, tone and strengthen your body while reducing stress. It is best not to eat within 2 hours before the start of class. Please dress comfortably and bring a tapas yoga mat, a tie or strap, 2 yoga blocks and a small throw pillow. Classes run continuously (unless otherwise noted) throughout the year. **PLEASE NOTE: This course is not appropriate for pregnant women. Limit 18**

ZUMBA

Zumba Fitness \$45
Wednesday Evenings
Instructor: **Miss Chrissy**
7:15-8 p.m.
Class started 3/20-5/29
Sign-up in progress
8 Sessions (5/8,5/22,5/29)
Limit 25
No Wed. night Zumba in June

Zumba Fitness \$45
Saturday Mornings
Instructor: **Miss Chrissy**
10 a.m.-10:45 a.m.
Class started 4/20-6/29
Sign-up in progress
8 Sessions (5/4,5/11,5/25, 6/15, 6/22, 6/29)
Limit 25

AEROBICS

SENIOR AEROBICS DANCERSIZE \$50.00
Thursday morning
10-11 a.m.
Instructor: **Mary Ellen Zaharia**
started 2/28-6/13
Sign-up in progress
15 Sessions
Make-up class 6/20
Sneakers required Limit 25

AEROBIC DANCERSIZE \$50.00
Thursday evenings,
7:30 - 8:30 p.m.
Instructor: **Mary Ellen Zaharia**
Class started 2/28-6/13
Sign-up in progress
15 sessions
Make-up class 6/20
Sneakers & mat required Limit 25

FITNESS

Strength, Flexibility and Balance \$22
Monday Afternoon 2:30-3:30 p.m.
Instructor: **Barbara Gilmartin**
(Certified National Gym Association
Personal Trainer)
New class starts 6/17-8/12
No class 7/1
Resident sign-up 6/3 Non-resident 6/10
8 sessions
Limit 25

ROTATIONAL ART EXHIBIT



Dalita Haigian will display her Beautiful oil/acrylic paintings during the month of May!

ATTENTION:



For everyone's safety, please slow down in the parking lot and do not park in front of the mailbox.
Park in designated spaces only!





LIBRARY TRIPS



THE ZEPHYR YACHT, Tuesday, June 11 \$81.00 Sign-up in progress!
Depart 9:30 a.m. Return Approx. 6 p.m.



Cruise the New York Harbor aboard the luxurious Zephyr Yacht Enjoy the sun deck! We will have a one hour narrated sightseeing cruise and leisure time at the South Street Seaport. Lunch is included at the Golden Unicorn Restaurant in Chinatown! Family style luncheon includes: Steamed Crystal Shrimp Dumpling, Beef on a skewer, sautéed chicken, Peking style baked pork, and vegetables!



NEW MUSEUM PASS!

SUFFOLK COUNTY VANDERBILT MUSEUM & PLANETARIUM

Take advantage of your Library's Museum Pass Program! This new pass admits 2 adults and 4 children under 18 to free grounds admission, exhibits of marine and natural history specimens, mansion tours and all regularly scheduled planetarium shows.

We continue to provide passes to the following: American Airpower Museum, Cradle of Aviation Museum, Garvie's point Museum and Preserve, Intrepid Sea, Air & Space Museum, Long Island Children's Museum, Nassau County Firefighters Museum and Old Westbury Gardens. In person reservations only at the Reference Desk for Plainedge Library cardholders.

DRIVING COURSES

NOTE: Regarding the driving courses, please do not park in the Library parking lot, nor in front of stores in shopping center. Parking is available on Guttenberg Path, the street located parallel to Hicksville Road. Thank you.

The cost of the DSP classroom course in NY is \$17 for AARP members & \$19 for non-members.

AARP DRIVING \$17 AARP MEMBERS / \$19 NON-MEMBERS

DEFENSIVE DRIVING \$32.00

Event Date	Sign Up Dates	Event Date	Sign Up Dates
[Fri., May 3] 9:30 a.m.-5:00 p.m.	Sign-up in progress	[Sat., May 18] 9:00 a.m. - 4:00 p.m.	Sign-up in progress
[Sat., August 10] 9:30 a.m.-5:00 p.m.	Resident sign-up Sat., 7/6 Non-resident sign-up Sat., 7/20	[Sat., Sept 7] 9:00 a.m.-4:00 p.m.	Resident sign-up Sat., 8/10 Non-resident sign-up Sat., 8/24

This course for drivers 50 years of age & older is given in one 8-hour session, including a break for lunch. You will also be eligible for percentage discounts on your insurance premiums. If only one spouse is 50 years of age or older, you may both register for this course but you must attend together. Pay \$17, \$19 if non-member, at registration with undated checks made payable to AARP. If two are attending, we must receive undated checks from each individual wishing to attend. Please note that the fee is non-refundable.

IMPORTANT: If you are an AARP member, you must write your membership # on your check to receive the reduced rate. Also, please bring your driver's license & a black or blue ink pen to class. PLEASE NOTE: In person registration only.

This driving course is not limited to those 50 years of age or older. You will also be eligible for percentage discounts on your insurance premiums. Checks only. Please make checks payable to **Plainedge Public Library**. NOTE: If two are attending, we must receive separate checks from each individual wishing to attend.

Please bring your driver's license and a black or blue ink pen to class.

NOTE FOR ALL EVENTS: Plainedge residents will be given preference registering for all courses and programs requiring sign-up. After 7 days, non-residents will be placed on a waiting list and will be notified if space is available. Refunds can only be issued if your ticket is sold to a replacement.

CHILDREN'S ACTIVITIES/INFORMATION

Please Note: REGISTRATION FOR CHILDREN'S PROGRAMS IS NOW EXCLUSIVELY ONLINE.

Online registration for all programs & crafts/activities will begin on Monday, May 6 at 10:00a.m. for Plainedge School District residents. Each child you register will need a valid Library card with a PIN established. Do this by going to www.plainedgelibrary.org and click on "Online Catalog" on the bar across the top of our homepage. Then, click on "My Account/E-Mail Signup" when you get to the next page. Follow the directions from there to create your four digit PIN.

TO REGISTER: Go to our Library's homepage, www.plainedgelibrary.org and click on "Events", then click on the "Children's Programs" option. You may also scroll down to the middle of the homepage and click on the colorful "Kids Programs" logo to get access to Children's programs.

Email confirmations will automatically be sent to you about your status, registered or wait-listed.

Out-of-district residents may register online starting Monday, May 13 depending on availability. All programs are age specific, including those where adults attend with children. Please make necessary childcare arrangements.

PLEASE NOTE: The Library charges a materials' fee for a number of the Children's programs. In person payment is required. After your online registration process is complete, contact the Children's Services Department at 735-4133 X12 or X13 to set up a time to pay. If payment is not received within seven days of registration, the Library reserves the right to offer the spot to someone from the waiting list.

"DAD, YOUR TIE-RIFFIC" CARD CRAFT**

Saturday, June 1
10:00a.m.-11:00a.m.
Grades K-5

****\$2.00 materials fee per child is due after completing the online registration process. Please contact Children's Services Staff to set up payment.**

Create a really cool "shirt & tie" card for Dad for Father's Day!

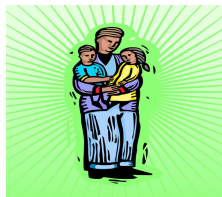


PRESCHOOL PLAYGROUP

Tuesday mornings, June 4 & June 11
10:00a.m.-11:15a.m.

Ages 3-5 years with accompanying adult

Come join us again for music, movement, and plenty of playtime. Parent/caregiver participates with their child. *Child needs to be at least 3 years old by June 4 to participate.* No unregistered siblings with the exception of infants, please. This will be our final Preschool Playgroup for the season. Please check further newsletters for when we resume in the fall.



DOUGHNUTS FOR DAD

Thursday evening, June 13
7:00p.m.-7:30p.m.
For families



Join us for a program celebrating Dads! Hear some stories & make a special craft for Dad. There will be doughnuts for the grownups & Munchkins for the munchkins!



2013 SUMMER READING PROGRAMS REVIEW

2013 Summer Reading Program Kick-Off Carnival - Monday, July 1 10:00a.m.-2:00p.m.

What a great way to kick off Summer Reading at the Plainedge Public Library. Play games and win prizes. Make a craft and see other surprises. It will be a fun time for all! Jason Reilly will be back with his popular "Frogs, Bugs & Animals" program. Carnival rain date will be Friday July 5, 10:00a.m.-2:00p.m. *Come to the Children's Services Department to pick up your tickets after you register for Summer Reading programs beginning Monday, June 10.*

PLEASE NOTE: Beginning this summer, both Reading Club and Read-To- Me Club members can come to the Library at the same time during scheduled Summer Reading Program times on Tuesdays, Wednesdays or Thursdays. Please refer to the next newsletter for specific dates and times.

Dig Into Reading! Summer Reading Club 2013 (For children entering 2nd through 5th grades)

Reading Club members read at home. They come back to the Library once a week with reading charts and report forms for reporting, stickers and prizes. The Club begins on Tuesday, July 9 and ends on Thursday, August 1. Club members will be invited to a special performance in August.

Little Go-Phers Read-To-Me Club 2013 (For infants up to children entering 1st grade)

All reading is done at home between adult and child together. Parents and children come back once a week with reading charts for stickers and prizes. Read-To-Me begins Tuesday, July 9 and ends on Thursday, August 1. Participants are invited to a special performance in August.

We Dig Picture Book Time 2013 (For children 2 years of age by 6/30/13 up to those entering 1st grade.

Picture Book Time begins on Wednesday, July 10 and ends on Wednesday, July 31. There will be three times to choose from during the day. There will be a special performance for all participants in August.

If you have any questions regarding the upcoming Summer Reading Programs at Plainedge Public Library, please call the Children's Services Department at 735-4133 X12 or X13. You can also email us at kids@plainedgelibrary.org. Look out for the next Library newsletter and check out our Library's home-page to access our program calendar for more information about the Summer Reading programs and crafts/activities during the summer. Online registration for Summer Reading Programs and craft/activities begins Monday June 10 at 10:00 a.m. for Plainedge Schools District residents. Out-of- district residents may register beginning Monday, June 17 depending on program availability.



BOARD OF TRUSTEES

Laura Oden-Bell boardpres@plainedgelibrary.org
Ann Doxsey adoxsey@plainedgelibrary.org
Dave Gottlieb dgottlieb@plainedgelibrary.org
Ellen Ryder eryder@plainedgelibrary.org
Michael Giris mgiris@plainedgelibrary.org
Marilyn Kappenberg Library Director

Non-Profit Org
 U.S. Postage
 PAID
 Massapequa, NY
 Permit No. 12

1060 Hicksville Rd; Massapequa, NY 11758-1289
 Phone: (516) 735-4133 Fax: (516) 735-2510
 Website: www.plainedgelibrary.org

*Michael Dietz - Newsletter Publisher
 Maureen Hopper—Program Coordinator & Editor*



LIBRARY HOURS

Monday - Thursday	9:00 a.m. - 8:45 p.m.
Friday	9:00 a.m. - 5:45 p.m.
Saturday	9:00 a.m. - 4:45 p.m.
Sunday	Closed

HOLIDAY

Mon., May 27 (Memorial Day) Closed

Library will be closed on Sundays from May to Oct.

May 2013

Please note: The Board of Trustees meets monthly, usually the third Monday of the month, at **7:00 p.m.**, in the Local History Room. The next monthly meeting will be **Wednesday, May 22**. All meetings are open to residents of the community and all interested individuals are invited to attend. The agenda includes a period for community questions and comments.

WANTED!

OLD PHOTOGRAPHS OF PLAINEDGE



Do you, or do you think your friends or relatives or even neighbors might have photographed our library when we were across the street from our current location in the early 60's? Now is the time to have your own personal scavenger hunt for Plainedge historical photos., diagrams, paintings or documents of the Plainedge District. Don't wait too long or these rare items might disappear. We would love to put these items or even any historical stories you might acquire in our archive or on our website.

Give Michael Dietz a call at (516) 735-4133 ext 17 as soon as you discover these masterpieces or just email them to it@plainedgelibrary.org



PLAINEDGE LIBRARY CELEBRATES 50 YEARS OF SERVICE!



In November 1962, residents of Plainedge supported by a vote of 3,143 to 1,401 for a referendum to open a tax-supported library. On October 22, 1963, the Plainedge Public Library opened in the Midlawn Shopping Center (across the street from the present library). In 1967, the Plainedge Library moved to its new quarters, the Jerome H. Brown Memorial Building (its present location)!